



**NETBALL
COLLECTION**

26



- 4 _____ **GILBERT NETBALL**
- 5 _____ **MATCH BALLS**
- 6 _____ **TRAINING BALLS**
- 7 _____ **SPECIAL PRINT BALLS**
- 8 _____ **SPECIALITY TRAINING BALLS**
- 9 _____ **SIGNATURE BALLS**
- 10 _____ **NOVELTY BALLS**
- 11 _____ **LUGGAGE**
- 14 _____ **COURT EQUIPMENT**
- 15 _____ **TRAINING EQUIPMENT**
- 15 _____ **ACCESSORIES**
- 17 _____ **NETBALL SHOES**

GILBERT NETBALL

THE BRAND

Power. Passion. Performance.

We proudly stand as a globally renowned netball brand, dedicated to upholding excellence in this beloved sport. Our mission revolves around fostering growth within the netball community, strengthening bonds, and empowering participants to elevate the game on all fronts. Our products continue to be embraced by elite netball players worldwide.

Gilbert Netball's legacy dates back to the 1990s, establishing itself as a prominent name in the global netball scene. Originally rooted in rugby, our exceptional ball engineering seamlessly transitioned to netball, offering unparalleled grip patterns that set us apart. This dedication to progress allows us to honor the legacy of James Gilbert, who set the bar over 190 years ago. Our new range of team wear, clothing, and equipment bears the endorsement of international netball players and teams, catering to the specific needs of our valued netball community, from players to officials and supporters alike.

We have listened to your feedback, both on and off the court, and made substantial improvements to our offerings, aligning them with the desires of consumers. Our commitment to the netball family at every level remains steadfast, working collaboratively to help all members achieve their aspirations.



INTERNATIONAL
NETBALL
FEDERATION



NETBALL
Europe



NETBALL
Asia



NETBALL
Oceania



NETBALL
Americas



NETBALL
Africa





THE OFFICIAL SOUTH AFRICAN BALL RANGE



PROUD PARTNERS



PROUD PARTNERS



26 February 2025

RE: SASN'S OFFICIAL ENDORSEMENT OF GILBERT SCHOOLS NETBALL RANGE

We hereby proudly reiterate our endorsement of the Gilbert Netball Range as the Official Ball of South African Schools Netball.

Gilbert recently extended their agreement with the INF as the official netball of the Netball World Cup. This gave us the confidence required to continue our partnership and seek areas to activate and grow together. We hereby introduce to you the new Official South African Schools Netball Range for 2023/24:



SPECTRA

Official Match Ball of SA Schools Netball

High-School Match Ball

PULSE

Official Match Ball of Schools Netball

Entry Level High-School and Primary- School Match Ball

We hope that the below endorsement creates consistency in play and gradually builds teams and players towards the National Tournaments and teams in South Africa.

Kind Regards,

DI WOOLEY

PRESIDENT SOUTH AFRICAN SCHOOLS NETBALL (SASN)

CHOOSING YOUR NETBALL



TRAINING VS MATCH BALL

Gilbert training netballs are made with cost and resilience in mind so they can withstand the rigours of multiple training sessions. They are made with a higher percentage of synthetic rubber rather than natural rubber which makes them a more robust ball, but also reduces the natural grip properties.

Gilbert match netballs on the other hand have been designed and produced with high performance in mind. Due to the performance nature, match balls are more expensive and therefore are often used in team run-throughs and matches rather than regular training sessions. Gilbert match netballs are made with more natural rubber which naturally enhances the grip, essential for match play.

QUANTUM X5	ECLIPSE	SPECTRA	PULSE	APT
<p>GRIP ★★★★★</p> <p>DURABILITY ★★</p> <p>PERFORMANCE ★★★★★</p>	<p>GRIP ★★★★★</p> <p>DURABILITY ★★★</p> <p>PERFORMANCE ★★★★★</p>	<p>GRIP ★★★</p> <p>DURABILITY ★★★★★</p> <p>PERFORMANCE ★★★</p>	<p>GRIP ★★</p> <p>DURABILITY ★★★★★</p> <p>PERFORMANCE ★★★</p>	<p>GRIP ★★</p> <p>DURABILITY ★★★★★</p> <p>PERFORMANCE ★★★</p>
				
SIZE: 5	SIZE: 5	SIZE: 5, 4	SIZE: 5, 4	SIZE: 5, 4
MATCH			TRAINING	

SIZING

Size 4 = 8-10 years old

Size 5 = 10+ years old

Regulation weight for a Size 5 netball = 460gms

INFLATION

Pull the ball into shape

Moisten needle

Inflate to recommended PSI

After 5-7 days the balls will need to be topped up

PRODUCT CARE

Check the PSI before every use

Avoid use on rough surfaces as wearing will vary depending on the surface

Don't sit on inflated netballs

Rotate the balls in your kit to ensure even usage

QUANTUM X5

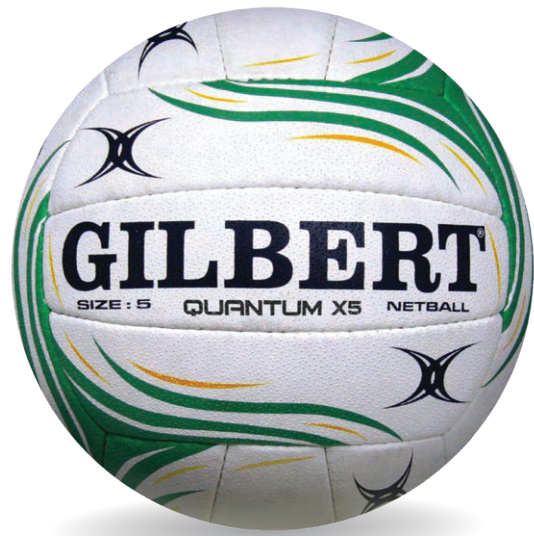
FOR INDOOR USE ONLY

FEATURES:

- G-XV rubber compound ball surface.
- Pro Performance air-loc bladder.
- International match quality ball.
- Multi-laminate construction.
- Quantum grip.
- Hydratec.

Sizes: 5 only

Colours: Green / Gold



ECLIPSE

FOR REGIONAL USE ON ANY SURFACE

FEATURES:

- Match quality ball.
- Top-grade natural rubber surface.
- Multi-laminate construction.
- Gilbert grip configuration.
- Pro Performance air-loc bladder.
- Hydratec.

Sizes: 5 only

Colours: Navy Blue / Sky Blue

Official Match Ball of NSA

SPECTRA

FOR REGIONAL USE ON ANY SURFACE

FEATURES:

- Universal use outdoor and indoor.
- Training/Junior Match quality ball.
- Top grade natural rubber surface.
- Cotton-Laminate construction.
- Duragrip pimple configuration.
- Performance butyl bladder.
- Hydratec.

Sizes: 5, 4

Colours: Green, Blue, Turquoise

Official Match Ball of NSA and South African Schools Netball





PULSE

FEATURES:

- Entry level balls.
- Blended rubber surface.
- Cotton laminate construction.
- Duragrip pimple configuration.
- Butyl bladder.

Sizes: 5, 4

Colours: Sky Blue, Pink and Orange

Official Ball of South African Schools Netball



APT

FOR GENERAL USE ON ANY SURFACE

FEATURES:

- Outdoor training balls.
- Hard wearing rubber surface.
- Nylon wound netball.
- Butyl bladder.

Sizes: 4 or 5

Colours: 1 - Blue, Yellow, Green, Pink

Sizes: 4 or 5

Colours: 2 - White, Pink, Blue



PROUD PARTNERS

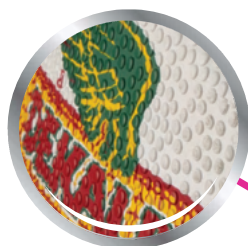


SPECIAL MAKE-UP NETBALLS

HAVE YOUR LOGO OR DETAILS PRINTED ONTO ONE OF OUR NETBALLS

YOUR LOGO ON TWO PANELS

PLACE YOUR SCHOOL, TEAM OR SPONSOR LOGO



CHOOSE YOUR OWN COLOURS

CHOOSE THE PRIMARY & SECONDARY COLOURS



Personalised balls can be produced for clubs, schools, award presentations, dinner gifts or any other corporate or private function. We can offer you a customised product with minimum order quantities as low as 32 netballs.

Minimum Quantity		
COMPETITION AND TRAINING NETBALLS		
Order quantity in multiples of:		
	Size 5	Size 4
Quantum X5	32	
Eclipse	32	
Spectra	32	40
Pulse	40	40
Mini Netball	Details available on request.	
Keyrings		
PLEASE NOTE: Minimum Quantity applies per size.		
ENQUIRE WITH YOUR LOCAL AREA REPRESENTATIVE FOR QUOTE		

Logo's & Artwork
We request that all artwork be supplied in vector .ai .EPS or .PDF formats with Pantone Colors . If you do not have the logo in vector format, there will be an extra charge for the logo trace of R1 800.00 of .TIFF or .JPG file formats which must be at least 300dpi after which the new artwork will be sent back to you to keep on file. Please allow 3-4 days for artwork.

Artwork Origination Charge
Artwork origination charge applies for every different model of Netball chosen and every logo variation.

Order Schedule	
DATE ORDER FINALISED	APPROXIMATE DELIVERY MONTH
06 June 2025	November 2025
04 July 2025	December 2025
08 August 2025	January 2026
05 September 2025	February 2026
03 October 2025	March 2026
07 November 2025	April 2026
05 December 2025	May 2026
09 January 2026	June 2026

PLEASE NOTE THAT THE DATES ARE FINAL AND ALL ORDERS PLACED AFTER THE SPECIFIED DATES WILL NEED TO BE PLACED ON THE NEXT AVAILABLE CONTAINER. ORDERS CAN ONLY BE PLACED ONCE ALL ARTWORK IS SIGNED OFF, QUANTITIES ARE CONFIRMED AND DOCUMENTATION IS RECEIVED BY THE PERFORMANCE BRANDS OR GILBERT REPRESENTATIVE.

PLEASE NOTE IF YOU DO NOT ADHERE TO THE ABOVE MENTIONED CUT OFF DATES PERFORMANCE BRANDS OR GILBERT WILL NOT BE RESPONSIBLE FOR DELAY IN ORDERS.

Prices based on prevailing price list, plus artwork origination charge @ R1 800.00 per logo origination. This charge is waived if the order exceeds 100 balls per same model and size. If the same ball design (with no changes to design/ model /size) is ordered within a 12-month period no new artwork fee applies.

CREATED **2** PERFORM



CONTROL-A-BALLS

TRAINING AID

FEATURES:

Set of five balls to improve passing and catching. Each ball behaves differently to challenge the user during training.

Match Ball

Standard weight and grip pattern of the Spectra Ball.

Heavy Ball

Approximately 650g, the player must adapt to make accurate passes.

Light Ball

Approximately 300g, the player must adapt to make accurate passes.

Gripless Ball

Standard Spectra weight, but this ball is smooth, so in different conditions it can be very grippy or incredibly slippery.

Unstable Ball

Weighs 400g and then the user adds 280g of water. Within the pack there is a pump that allows water to be added to the inner bladder. This makes the ball completely unstable as the water moves within it.

Sizes: 5 only
Colours: Fluro Pink



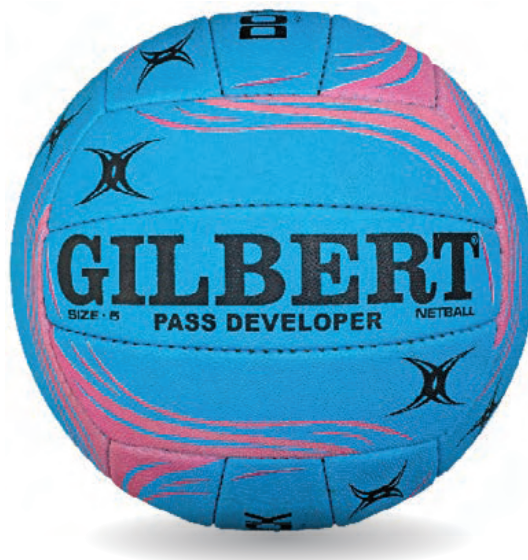
PASS DEVELOPER

FOR INDOOR & OUTDOOR USE

FEATURES:

An overweight ball used for pass development
Helps to strengthen the wrists
Increased passing accuracy

Sizes: 5 only
Colours: Blue/Pink



SIGI BURGER SIGNATURE BALL

FOR INDOOR & OUTDOOR USE

FEATURES:

Blended rubber surface.
Synthetic latex bladder.
Training Netball.

Sizes: 5 only

Colours: Multi



JODIE GIBSON SIGNATURE BALL

FOR INDOOR & OUTDOOR USE

FEATURES:

Blended rubber surface.
Synthetic latex bladder.
Training Netball.

Sizes: 5 only

Colours: Multi



MARY CHOLHOK NUBA SIGNATURE BALL

FOR INDOOR & OUTDOOR USE

FEATURES:

Blended rubber surface.
Synthetic latex bladder.
Training Netball.

Sizes: 5 only

Colours: Blue/Pink



VANES-MARI SIGNATURE BALL

FOR INDOOR & OUTDOOR USE

FEATURES:

Blended rubber surface.
Synthetic latex bladder.
Training Netball.

Sizes: 5 only

Colours: Multi



APT MINI NETBALL

SUITABLE FOR GIFTING

FEATURES:

Skill development.
Autograph friendly.
Fun and versatile.

Sizes: Mini

Colours: Purple/Blue/Pink



GLAM HEX NETBALL

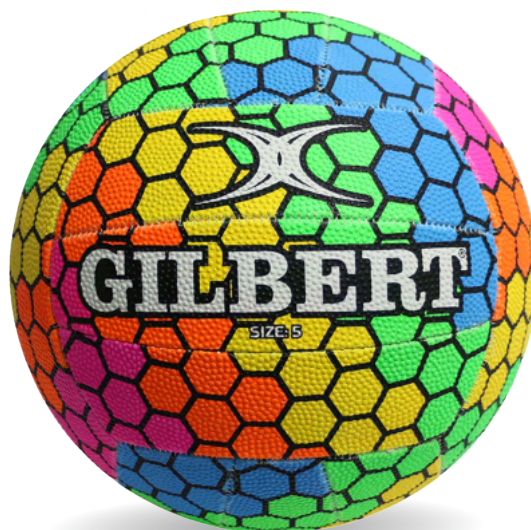
SUITABLE FOR OUTDOOR USE & GIFTING

FEATURES:

Blended rubber ball surface for durability.
Synthetic latex bladder for air retention.
Cotton laminate construction to maintain shape.

Sizes: 5 only

Colours: Multi



NETBALL SUPER LEAGUE REPLIC BALL

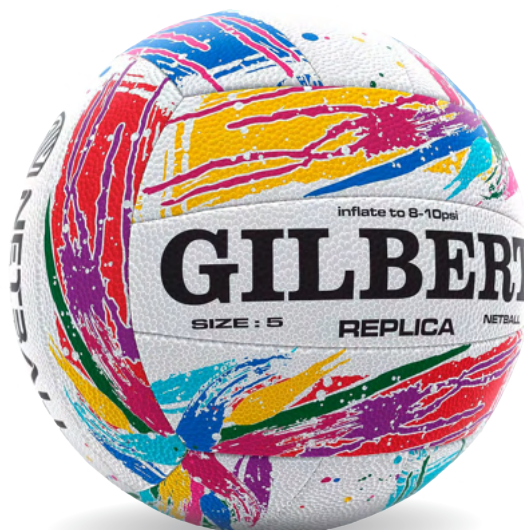
SUITABLE FOR OUTDOOR USE AND GIFTING

FEATURES:

Blended rubber ball surface for durability.
Synthetic latex bladder for air retention.
Cotton laminate construction to maintain shape.
Duragrip and Hydratec.

Sizes: 5 only

Colours: Multi



WE'VE GOT YOU COVERED.

As with all sports, the big bits of kit are always important, but the smaller items can be just as invaluable when it comes to honing your skills and abilities.

Whether you're a player looking for the perfect kit bag to get you and your stuff to and from matches and training sessions or a coach looking for equipment that will help your team develop their speed and agility, the Gilbert Netball training equipment range will have something for you.

We put just as much effort into producing our training equipment as we do our shoes, balls and clothing so that you can be sure every component of your game is at its best.

PLAYER PRO KIT BAG

FEATURES:

- Over shoulder carry strap
- 2 side zip compartment
- Large main compartment
- Hard base maintains structure
- Elastic top holder

Dimensions: H: 24cm x W:29cm x L:55cm

Colours: Red, Bottle, Royal, Navy, Black



PLAYER BACKPACK

FEATURES:

- 2 shoulder carry straps
- Front zip compartment
- Large main compartment
- Middle zip compartment
- 2 side mesh bottle holders

Dimensions: H: 24cm x W:29cm x L:55cm

Colours: Bottle, Red, Royal, Navy, Black



CLUB TOUR BAG

FEATURES:

- Telescopic handle.
- Reinforced double carry handles.
- Two front zip pockets.
- Internal mesh compartments.
- Split luggage option.

Dimensions: H: 68cm x W:35cm x D:32cm

Colours: Black



CLUB HOLDALL V4 BAG

FEATURES:

- Multi-pocket design.
- Durable zips.
- Spacious and practical.

Dimensions: H: 35cm x W:62cm x D:30cm

Colours: Black & Red/ Navy and Royal/ Navy & Sky Blue



CLUB RUCKSACK V4 BAG

FEATURES:

- Multi-pocket organization.
- Dedicated laptop and tablet compartments.
- Innovative pocket for smaller items

Colours: Black/ Black & Red/ Navy and Royal/
Navy & Sky Blue



BREATHABLE BALL BAG

FEATURES:

Holds 10 size 5 netballs.
Shoulder strap and tie cord.
Fine mesh and polyester outer.

Colours: Royal, Black, Red



BREATHABLE 5 BALL BAG

FEATURES:

Holds 5 balls.
Shoulder strap and tie cord.
Fine mesh and polyester outer.

Colours: Royal, Red, Black



FINE MESH BALL BAG

FEATURES:

Holds up to ten balls.
Fine mesh outer.
Lightweight and durable.



COURT EQUIPMENT

POST PROTECTOR

FEATURES:

INF standard post protectors.
Available colours - red, yellow, white, black, maroon, brown, purple, silver, emerald green, green, orange, navy, royal or sky.

Price dependent on colour choices and / or post diameter.

Sizes: Diameter 50mm, 65mm & 80mm

SET OF 2



REPLACEMENT NET

SUPER NET SET OF 2.



TRAINING EQUIPMENT

SUPER SLALOM POLE INDOOR

FEATURES:

Fluorescent EVA non-shatter plastic.
Flat weighted base for court use.

SOLD INDIVIDUALLY OR PACKS OF 10 WITH BAG



BUMPING PADS

FEATURES:

Manufactured from water-resistant fabric with interior foam construction to the highest standard.

ONE SIZE ONLY
Colours: Black or Pink



NETBALL BIBS

FEATURES:

Set of seven.
Performance fabric.
Breathable eyelet polyester.

Options: Emerald/Green/Red/
Yellow/Royal

Sizes: Junior or Senior



LADDER FASTFOOT

FEATURES:

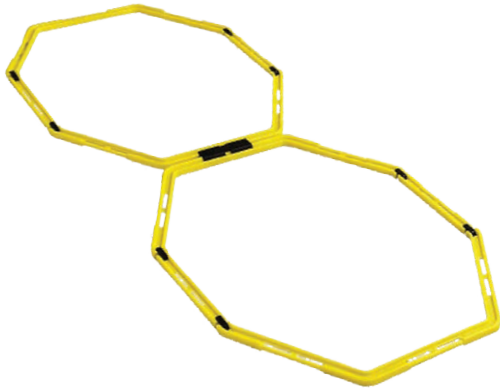
Nylon bound plastic straps
Packed in carry bag for structured training sessions

Options: 4 meters, 8 meters
Flat Bar



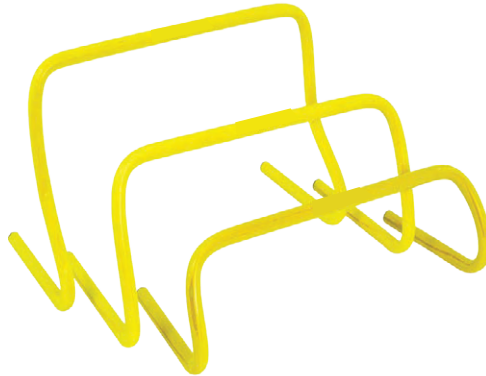
OCTAGON RINGS

SET OF 6



HURDLE

Available In: 4" / 6" / 9" / 12" or 20"
SOLD INDIVIDUALLY



2" MARKING CONES SET OF 50

Fluorescent EVA non-shatter safety cones.

COMES ON A HANGAR WITH 50 CONES



NETBALL AGILITY RUBBER DOTS

Non slip rubber markers. Ideal for on court drills both indoor and outdoors.

Options: SET OF 10



9 INCH NOSE CONE

The cones are made from a soft plastic which is very light weight and flexible.

Each cone is 9" high

SOLD INDIVIDUALLY



6 INCH NOSE CONE

The cones are made from a soft plastic which is very light weight and flexible.

Each cone is 6" high

SOLD INDIVIDUALLY



ACCESSORIES

TACTICS BOARD

FEATURES:

A3+ dry wipe board. Includes dry wipe pens, eraser and magnets.



COACHING FOLDER

FEATURES:

A3 + size dry - wipe board. Includes dry - wipe pens, eraser and magnetic markers. Plenty of room for notes.



WATER BOTTLES & CARRIER

FEATURES:

Tough bottle with sports cap. Traditional style carrier holds 8 bottles (Included) Carrier also available separately.





PRO WATER BOTTLE

750ml Capacity with Sports Cap. Easy-to-use, leak-proof, and perfect for quick sips on the go. No spills, no fuss—just pure refreshment.



WATER BOTTLE

Durable plastic bottle with sports cap. Holds 500ml of fluid.



STIRRUP PUMP

Ideal for club use. Substantial construction. Allows for quick ball inflation.



PRESSURE GAUGE

Used to ensure correct ball inflation. Ideal for individual use. Great value item.



8" DUAL ACTION PUMP

Easy to carry. Light weight.



STIRRUP PUMP ADAPTORS

Only available as a pack of two. Will fit the Stirrup pump

TEAMWEAR



ATOMIC BASELAYER

Brushed inner offers thermal protection. Ideal for cold weather activities. Ergonomically designed. Flat-locked seams. 86% Polyester, 14% Elastane. Available in sizes S-2XL
Colours: White, Black or Navy



ATOMIC LEGGINGS

Brushed inner offers thermal protection. Ideal for cold weather activities. Ergonomically designed. Flat-locked seams. 86% Polyester, 14% Elastane. Available in sizes S-2XL
Colours: Black



GILBERT IMPACT NETBALL SHOES

The Impact focuses on comfort and weight and is designed as a lightweight option, perfect for the fast, nimble player. The Impact uses GENIUS-FOAM cushioning throughout the sole and DURA Carbon+ rubber for maximum traction and durability on all court types. This high performance shoe is suitable for all levels of netball player.

FEATURES:

GENIUS FOAM MIDSOLE - Super fast energy return foam which enhances spring and propels players faster than ever.

TPU TORQUE S - Unique setup of shank insert prevents twisting in the shoe - provides arch support. Lateral support for turning and allows for explosive and reactive stability on court.

A.S OUTSOLE - Thin durable rubber used in rounded outsole for stable base and landing control.

ORTHOLITE X25 FOOTBED - Outstanding levels of rebound and comfort from branded footbed

IMPACT CAGE UPPER - Thin lightweight groove design provides breathability and works with foot contours.

COMFORT FIT PLUS - New high performance last provides dynamic comfortable fit.

DURA CARBON RUBBER+ - Carbon enhanced rubber provides grip, traction and durability - suitable for all surfaces

If you are looking for an elite level shoe with incredible technology combined with stylish design, look no further.

Available in sizes: UK 5-9

Colours: White/Silver

ANKLE SUPPORT

Heavy duty polyester fabric provides excellent strength and durability
Lace tightening system and removable plastic bones provide a secure fit and excellent ankle support
Restricts lateral movement of the ankle to help prevent overextending which may result in injury
Cushioned heel for added comfort and support
Suitable for most sports

SIZES: S (6-7), M (8-9), L (10-11)

Colours: Black or White





www.gilbertnetball.co.za



facebook.com/
GilbertNetballSA



@gilbertnetballsa

For More Information Contact
Info@performancebrands.co.za Or 021 180 44 444